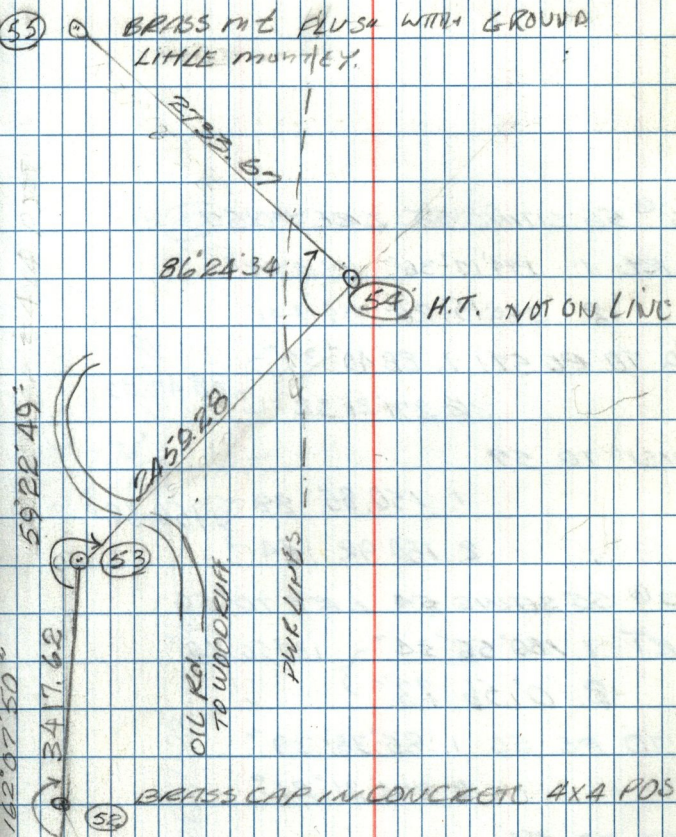


27 OCT. 1980

WEBER/CACHE CO. LINE CONTINUED MC 45-A

(31)



BRASS NAIL FLUSH WITH GROUND
LITTLE MOUNTAIN.

21.88
67

86°24'34.7
(54) H.T. NOT ON LINE

245°59.28

59°22'49

(53)

OIL FOR
TO WOODKUT

PINE LIMBS

162.07
347.68

BRASS CAP IN CONCRETE 4x4 POST

(52)